

Retains and Delegates Powers

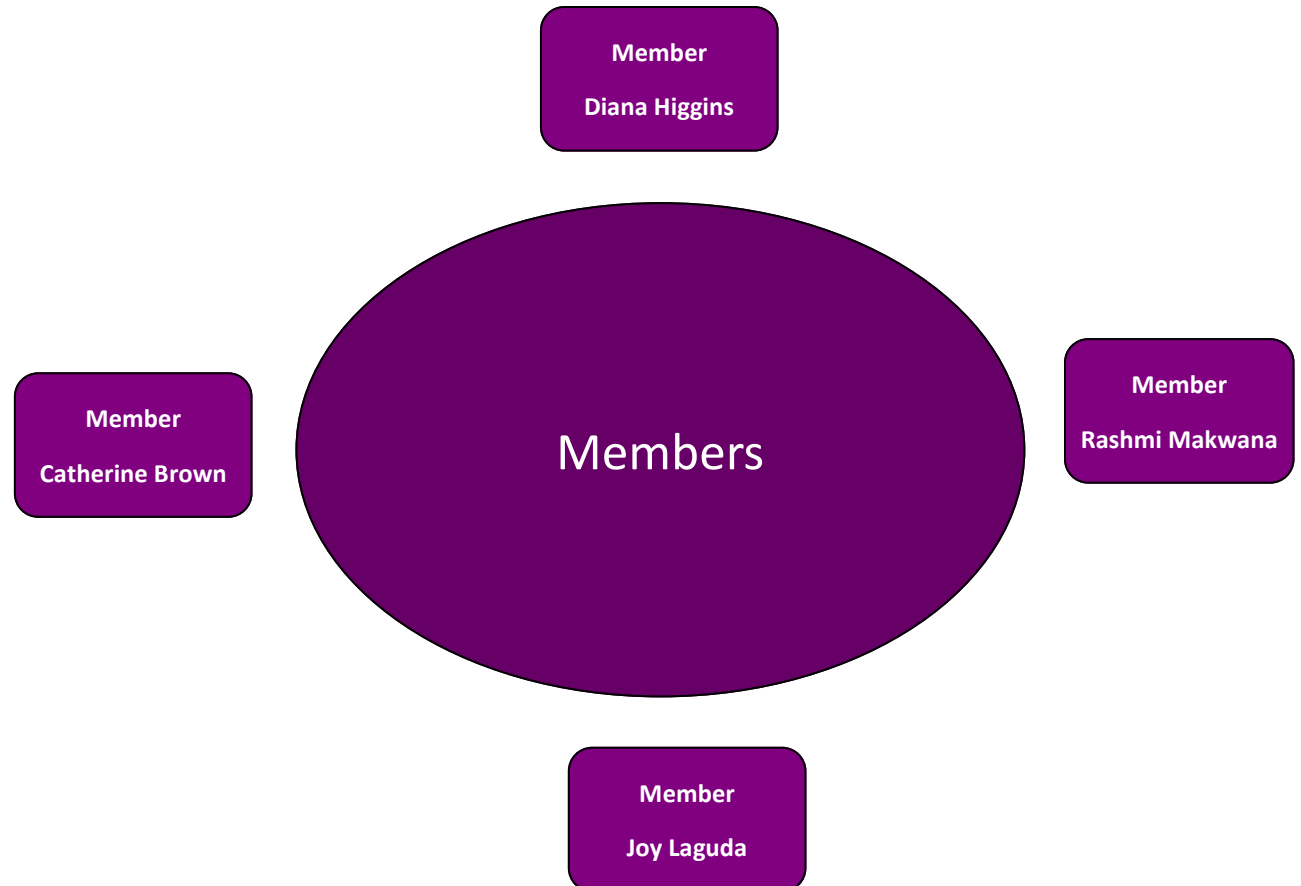
Executive powers to Implement

Advisory Bodies

LABs with Delegated Powers

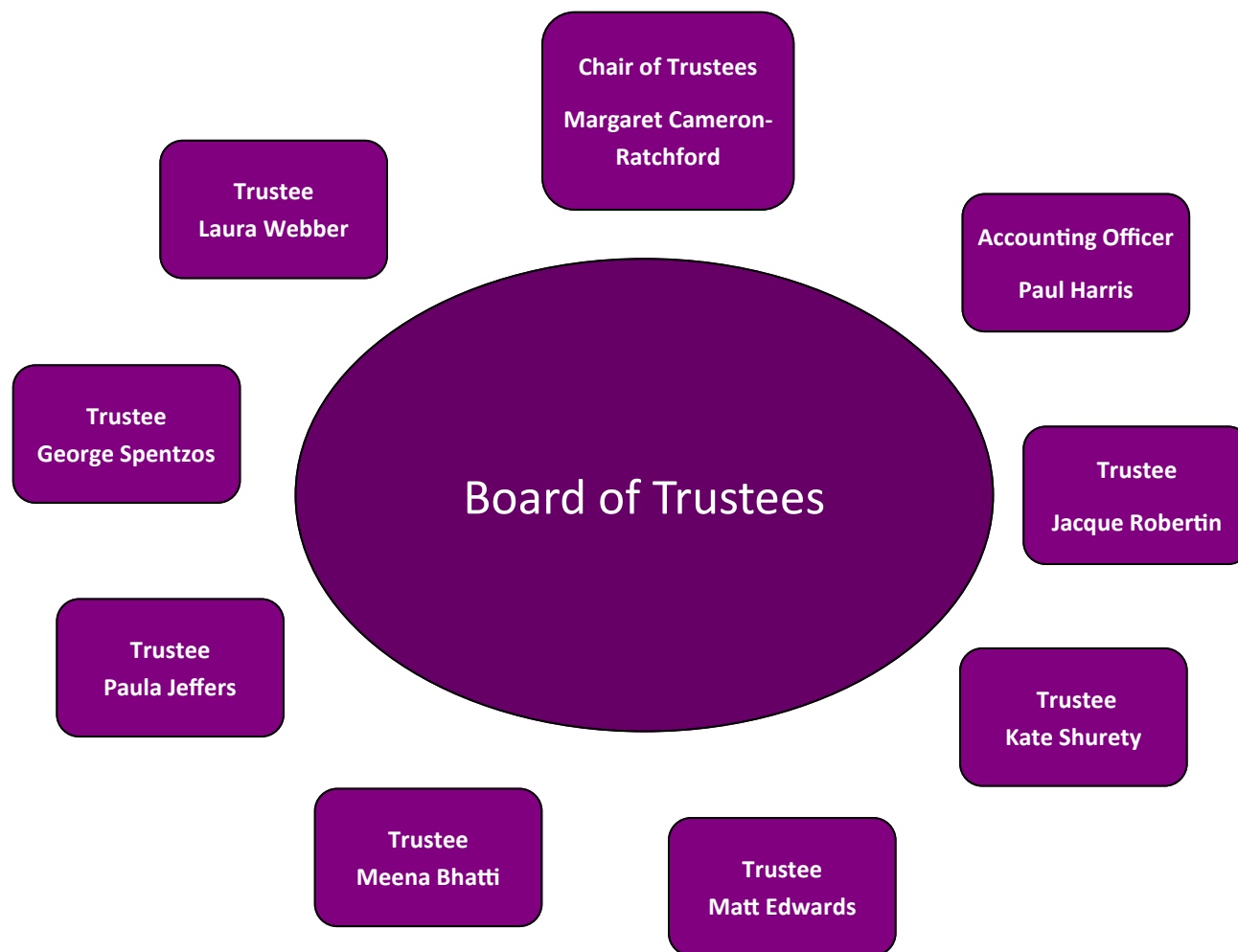
Members

- There will initially be five members
- The Members appoint up to 6 Trustees to the MAT
- Members rights are enshrined in Company Law and Members may:
 - wind up the MAT
 - Amend the Articles of Association
 - Appoint Trustees
 - By special resolution give directions to the Board.
 - Remove any Trustee
- In the event that the MAT is wound up without enough assets to satisfy its creditors, each Member would be liable to to pay up to £10 towards these debts.
- Each Member is asked to sign a letter confirming that they agree to further the vision and values of the MAT and comply with the Academies Finance Handbook in so far as it relates to members
- To ensure a suitable degree of independence between the membership and the board, no more than one Member will also be a Trustee
- Meet at least once a year including the AGM



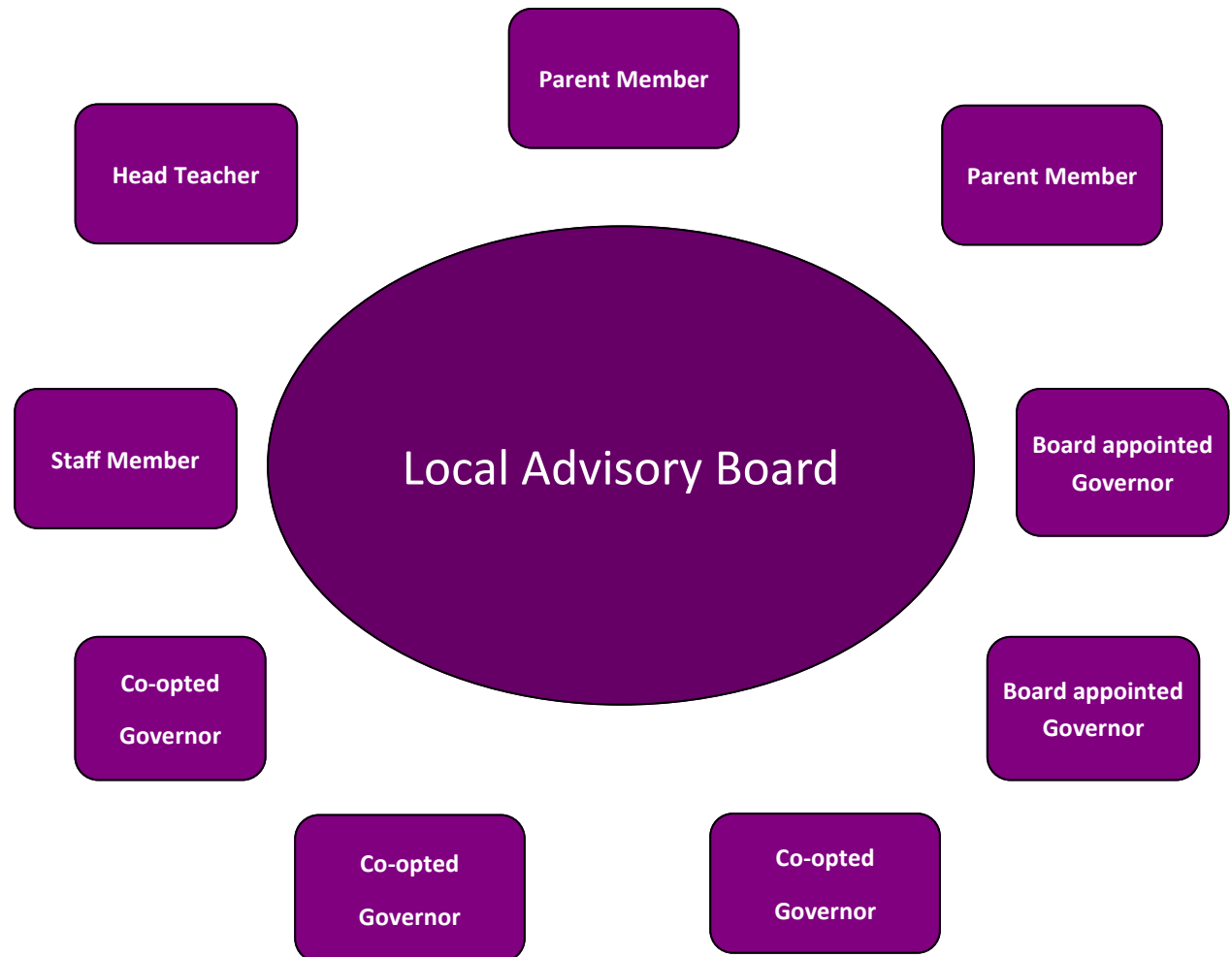
MAT Board of Trustees 2021/22

- All Trustees have been appointed by Members
- Trustees are responsible for the management and administration of the MAT and are accountable to the Members who act as a ‘check and balance’ on the performance of the MAT.
- There will be no less than 3 Trustees and no more than 13.
- The Board’s key responsibilities will be to ensure through governance structure and the Trust’s leadership team that (1) the Trust is making proper and effective use of public funds, (2) for the quality of provision and (3) has an effective strategy in place to meet its obligations.
- Each school will have in place a Local Advisory Board (LAB) —a committee of the Board. The LAB’s will only be able to establish decision-making sub-committees with the permission of the Board.
- The Board may also establish sub-committees (1) Audit & Risk, (2) Finance, Operations & Resource and (3) Safeguarding & Standards and membership will contain LAB members
- The Board will meet at least five times a year.



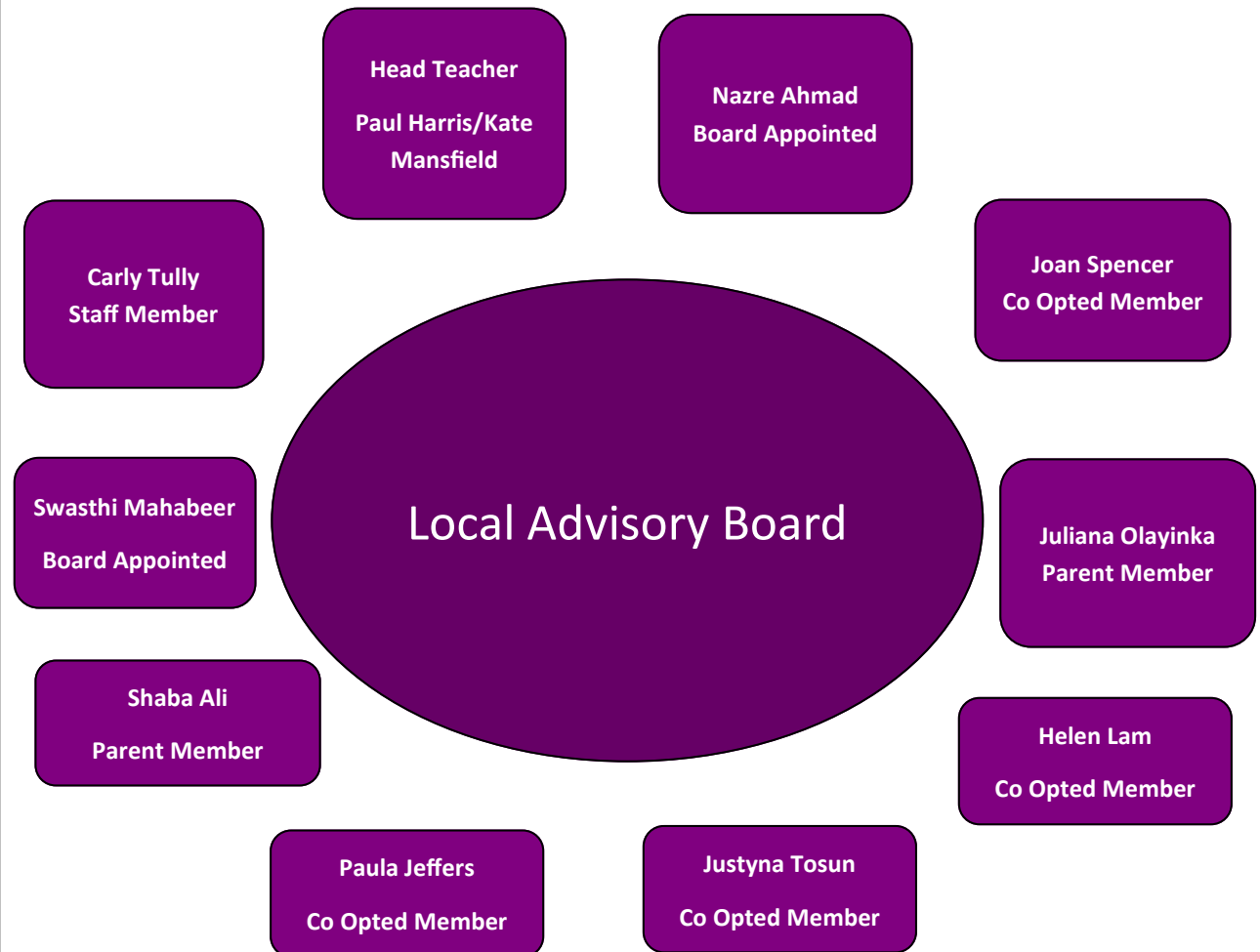
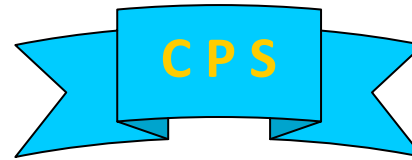
Local Advisory Boards

- The LAB is responsible for the “day to day” oversight of the operation of the Academy, by way of the powers delegated to it by the Trustees in accordance with appropriate terms of reference.
- LAB terms of reference may be drafted to deliver “supported autonomy” with the main Board retaining a range of powers to intervene depending on scale of any issues.
- Level of financial contribution from individual Academies to central operating costs can be varied proportionate to the income received from the DfE to operate the Academy and on the basis of other criteria established by the Board.
- The LAB composition can vary between schools, but the intention would be to have each LAB with between 5- 9 members, the composition would be as follows:
 - up to 2 elected parent governors
 - 1 staff governor
 - the Head Teacher
 - 3 co-opted governors
 - up to 2 board appointed governors (appointed for the skills they can contribute to the effective governance and success of the academy)
- The LAB will appoint one of the governors to act as the LAB Chair.
- The LAB will meet at least four times per year.
- The CEO and other members of the MAT’s management team will be entitled to attend and speak at LAB meetings.



Local Advisory Boards

- The LAB is responsible for the “day to day” oversight of the operation of the relevant Academy, by way of the powers delegated to it by the Trustees in accordance with appropriate terms of reference.
- LAB terms of reference may be drafted to deliver “supported autonomy” with the main Board retaining a range of powers to intervene depending on scale of any issues.
- Level of financial contribution from individual Academies to central operating costs can be varied proportionate to the income received from the DfE to operate the Academy and on the basis of other criteria established by the Board.
- The LAB composition can vary between schools, but the intention would be to have each LAB with between 5- 9 members, the composition would be as follows:
 - up to 2 elected parent governors
 - 1 staff governor
 - the Head Teacher
 - 3 co-opted governors
 - up to 2 board appointed governors (appointed for the skills they can contribute to the effective governance and success of the academy)
- The LAB will appoint one of the governors to act as the LAB Chair.
- The LAB will meet twice per term, either side of a full Board meeting,
- The CEO and other members of the MAT’s management team will be entitled to attend and speak at LAB meetings.



Local Advisory Boards

- The LAB is responsible for the “day to day” oversight of the operation of the relevant Academy, by way of the powers delegated to it by the Trustees in accordance with appropriate terms of reference.
- LAB terms of reference may be drafted to deliver “supported autonomy” with the main Board retaining a range of powers to intervene depending on scale of any issues.
- Level of financial contribution from individual Academies to central operating costs can be varied proportionate to the income received from the DfE to operate the Academy and on the basis of other criteria established by the Board.
- The LAB composition can vary between schools, but the intention would be to have each LAB with between 5- 9 members, the composition would be as follows:
 - up to 2 elected parent governors
 - 1 staff governor
 - the Head Teacher
 - 3 co-opted governors
 - up to 2 board appointed governors (appointed for the skills they can contribute to the effective governance and success of the academy)
- The LAB will appoint one of the governors to act as the LAB Chair.
- The LAB will meet twice per term, either side of a full Board meeting,
- The CEO and other members of the MAT’s management team will be entitled to attend and speak at LAB meetings.



Local Advisory Boards

- The LAB is responsible for the “day to day” oversight of the operation of the relevant Academy, by way of the powers delegated to it by the Trustees in accordance with appropriate terms of reference.
- LAB terms of reference may be drafted to deliver “supported autonomy” with the main Board retaining a range of powers to intervene depending on scale of any issues.
- Level of financial contribution from individual Academies to central operating costs can be varied proportionate to the income received from the DfE to operate the Academy and on the basis of other criteria established by the Board.
- The LAB composition can vary between schools, but the intention would be to have each LAB with between 5- 9 members, the composition would be as follows:
 - up to 2 elected parent governors
 - 1 staff governor
 - the Head Teacher
 - 3 co-opted governors
 - 3 board appointed governors (appointed for the skills they can contribute to the effective governance and success of the academy)
- The LAB will appoint one of the governors to act as the LAB Chair.
- The LAB will meet at least three times per year
- The CEO and other members of the MAT’s management team will be entitled to attend and speak at LAB meetings.



Local Advisory Boards

- The LAB is responsible for the “day to day” oversight of the operation of the relevant Academy, by way of the powers delegated to it by the Trustees in accordance with appropriate terms of reference.
- LAB terms of reference may be drafted to deliver “supported autonomy” with the main Board retaining a range of powers to intervene depending on scale of any issues.
- Level of financial contribution from individual Academies to central operating costs can be varied proportionate to the income received from the DfE to operate the Academy and on the basis of other criteria established by the Board.
- The LAB composition can vary between schools, but the intention would be to have each LAB with between 5- 9 members, the composition would be as follows:
 - up to 2 elected parent governors
 - 1 staff governor
 - the Head Teacher
 - 3 co-opted governors
 - up to 2 board appointed governors (appointed for the skills they can contribute to the effective governance and success of the academy)
- The LAB will appoint one of the governors to act as the LAB Chair.
- The LAB will meet twice per term, either side of a full Board meeting,
- The CEO and other members of the MAT’s management team will be entitled to attend and speak at LAB meetings.



Audit and Risk Committee

Jacque Robertin

Paula Jeffers

**Kulsum Seth
(LAB Kensington)**

George Spentzos

**Andrew West
(LAB North Beckton)**

Finance, Operations & Resource Committee

Laura Webber

**Margaret Cameron
Ratchford**

Matt Edwards

Kate Shurety

**Michelle Ellis
(LAB Ranelagh)**

Paul Harris

Safeguarding & Standards Committee

Rob Sewell
(LAB Ranelagh)

Laura Webber

**Susanna
Harksamp-Eve**
(LAB NB)

Meena Bhatti

Paul Harris