

The Tapscott Learning Trust Annual Report

2023/24



OUR VISION, VALUE AND AIMS

We work in partnership towards our vision, values and aims and support schools to develop their unique characteristics and adaptations so they can meet the needs of their communities. We also work in partnership with other schools and organisations to impact on the development of the wider education sector.



Our Vision

We empower our children through education, supporting healthy lifestyles and creating joyful learning environments to set them on the path to happy, successful lives.



Our Values

Whole Child Education: We believe in education that encompasses not only academic excellence but also promotes physical, emotional, and social well-being

Love of Learning: We create environments and opportunities that inspire engagement, excitement and a love of learning for our children, teams and communities

Health: We prioritise the health and well-being of our children, teams and communities, recognising the link between this and our success in all areas

Inclusivity: We embrace diversity and create an inclusive community where everyone is valued, respected, and supported

Working Together: We know the power of working in partnership to achieve the best outcomes for all children



Our Aims

- ✓ Make certain that all children are the cornerstone of our Trust and have an effective voice
- ✓ Ensure safeguarding is paramount and consistently applied in all schools and settings
- ✓ Promote and celebrate equality, diversity and inclusivity for all
- ✓ Guarantee that our schools offer a broad and balanced curriculum, allowing our children to access opportunities and experiences
- ✓ Invest in our people so they are successful and deliver the best education for our children
- ✓ Through education, support healthy lifestyles and create joyful learning environments to set all children on the path to happy and successful lives
- ✓ Form a platform for other schools and organisations with similar visions and values to join us for the mutual improvement of education
- ✓ Work in partnership with other schools, Trusts and organisations as part of our wider commitment to the development of the education sector
- ✓ Ensure that the Trust is wholly self-sufficient and operationally secure: with a community-led focus, local accessibility and transparency
- ✓ Ensure effective governance at all levels offering excellent challenge and strategic support

JOINT WELCOME FROM OUR CEO AND CHAIR OF TRUSTEES



Welcome to our 7th annual stakeholder report which will give you an overview of some of the things that have been achieved within the Trust and its schools over the last year.

2023-24 was another incredibly successful year for our Trust in many ways. Amongst our many successes, we were delighted to be awarded Beacon Well Trust status as part of the work that we do with the Youth Sport Trust.

At the start of the year the Trust Board appointed a new Chair of Trustees, Paula Jeffers. Before taking on the role of Chair, Paula had been a Trustee for a number of years and also a LAB member at Curwen Primary School and so came to the role deeply embedded in the Trust community. She also brings to the role many years of business experience in the financial services sector as well as a passion for education. Paula is a very active Trustee, regularly visiting all of our schools and experiencing at first hand all the great activities that take place.

We continue to work in partnership with many organisations and our Training and Sports Hubs provide essential support within the Trust as well as to other schools both locally and nationally. We also carried on our work with local and national government to develop programmes to enhance opportunities within all schools. We developed our Vision, Values and Aims which we believe is necessary to every developing organisation. Outcomes for our children continue to be strong across our schools, not only academically but socially and emotionally and in health and wellbeing and we are very proud of the work that all our schools have done in SEN and inclusion which was highlighted by all of them receiving excellent reports and awards from IQM (Inclusion Quality Marks).

We are grateful to have been supported by a dedicated team of Trustees, School Governors and Members who give their time and energy for free, working to constantly challenge and support us and we were delighted that an external review found governance within the Trust to be strong.

We would particularly like to take this opportunity to thank all TTLT staff, both in the central office and within each of the schools, for their amazing work over the year. Our Trust would not be the organisation it is without them!

With very best wishes,

Paul Harris
CEO

Paula Jeffers
CHAIR OF TRUSTEES



4
Schools

ALL Schools
provide breakfast
clubs and after
school provision

95%
staff
retention
rate

2,532
pupils



347
members
of staff



79
Languages
spoken

0
Exclusions



GOVERNANCE

Our Members oversee the work of the Board of Trustees to ensure that we are delivering and adhering to our agreed mission, vision and aims.

Our Trustees are responsible for the strategic leadership of the Trust, ensuring that it adheres to our agreed mission, vision and aims as well as being accountable for driving educational standards and financial good health.

Our Local Advisory Boards (LABS) oversee the running of their school in terms of the curriculum, safeguarding and the budget, ensuring that the school's leadership team is held to account for academic performance, high quality education, and quality of care.

99%
Governance
positions filled

50
Number of
Governors, Trustees
and Members

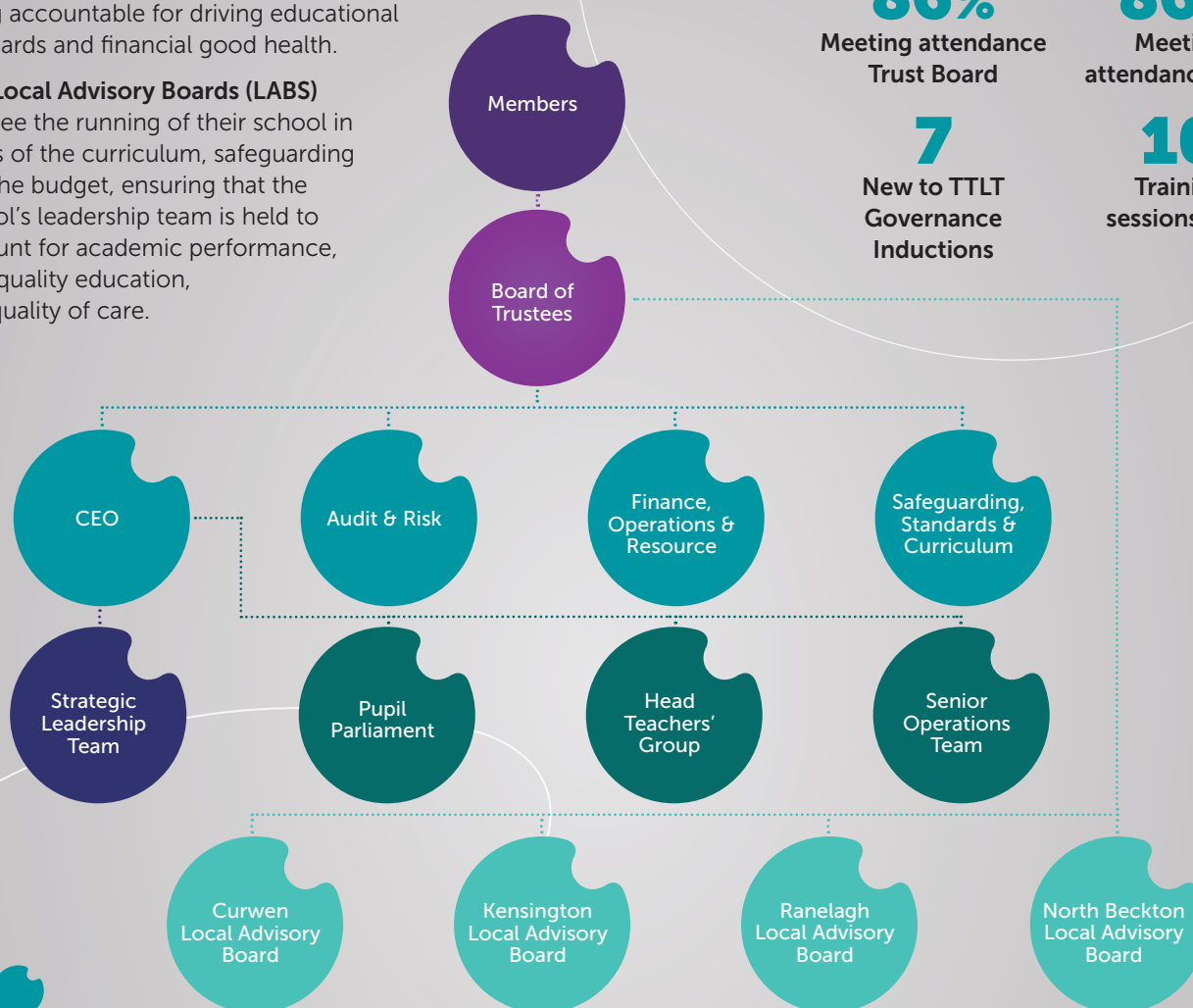
37
Meetings held
this year

86%
Meeting attendance
Trust Board

86%
Meeting
attendance LABS

7
New to TTLT
Governance
Inductions

10
Training
sessions held



We were delighted with the outcome of the External Review of Governance. Whilst we continually strive to ensure that the governance of the Trust is robust, it was a real testament to everybody's hard work, dedication, care and commitment to have this confirmed in an in depth external review.

TRUSTEE

04



In 2023/24 the Board appointed a new Chair of Trustees; Ms. Paula Jeffers. Paula has been a Trustee and also a LAB member at Curwen for some years and had served as Vice Chair to the Board during the previous year. She also sits on the Trust's Audit & Risk and Remunerations Committees and is the link trustee for Whistleblowing.

Paula Jeffers
CHAIR OF TRUSTEES



EQUALITY, DIVERSITY AND INCLUSION

TTLT is committed to meeting the needs of everyone within the Trust and ensuring that everyone is given opportunities to achieve their full potential.

Our schools hold a variety of inclusion quality marks and awards and TTLT provides regular training for staff including the Autism Education Trust Work-based CPD and Team Teach courses which are nationally recognised and supported by the Department of Education.

The schools within the Trust receive support with SEND from a central team and through participation in peer support meetings. During the Spring Term of 2023, the Trust commissioned an EDI staff survey with a follow-up mini-survey in the Spring term of 2024. The results were used to determine the focus of the work to be done during the next and future years.

Multilingualism

We value our pupils' backgrounds and cultural heritage, while fostering their identity and the rich linguistic repertoire they bring with them. We believe that multilingualism is a strength and hope that all pupils will benefit from first languages in our setting.

We want all pupils to feel valued regardless of their starting points and learn in an asset based approach to languages.

Soofia Amin



5.57%

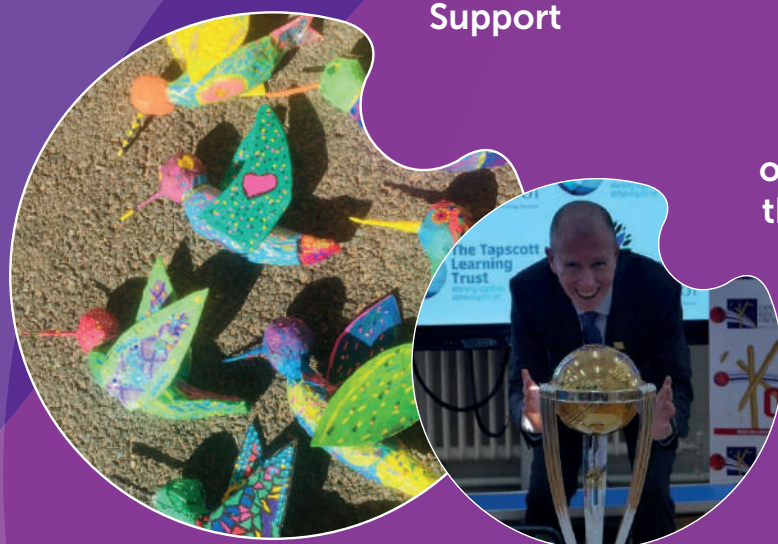
of children with a EHCP

11.11%

of children receiving SEN Support

16.68%

of children with SEND



93%

of staff believe the workplace is accessible

National Data 2024
Mainstream Primary Schools

TTLT
2024

EHCP 4.8% 5.57%

SENS 13.4% 11.11%

Total SEN 18.4% 16.68%

Helen Harris

EQUALITY, DIVERSITY AND INCLUSION OFFICER



RE, RSHE AND PSHE

Claire Clinton is the Director of Religious Education (RE)

for Newham schools, running the Standing Advisory Council on Religious Education (SACRE). She is also Director of PSHE at TTLT for Newham schools and works with a team of specialist advisors to deliver this support to schools.



Religious Education Support

299 teachers

52 Primary Schools (**83%**)

10 Secondary Schools (**60%**)

149 children attended Primary interfaith RE conferences;

60 pupils attended Secondary interfaith RE project

- Primary Network meetings included training on: teaching about non-religious beliefs: Humanism; Ofsted Report on RE; Thinking skills in RE.
- Secondary network meetings included masterclasses on: Muslim hermeneutics; Teaching ethics in RE; Humanism and secular worldviews in RE
- Collective worship course
- Termly tours of places of worship for teachers
- New to leading in RE course
- ECT training in RE
- Published 'challenging religious and non-religious stereotypes' toolkit and films for schools nationally - free of charge.

"This day has made me more excited to teach RE and share with staff all that I have learnt from this insightful day. I have cleared a lot of misconceptions I had about some religions."



100% of teachers attending network meetings said they were excellent



RSHE

196 teachers received training

39 Primary Schools (**62%**)

9 Secondary Schools (**55%**)

Training included: Equality - what this means in schools; knife crime prevention; testicular cancer early prevention; character strengths; dealing with sensitive issues.

In RSHE we led for schools a borough wide consultation on RSHE and published results to schools.

"Thank you very much for this session today, as always very informative and useful"



100% of teachers attending network meetings said they were very good or excellent



School Council Network

27 Teachers

22 Primary Schools (**35%**)

5 Secondary Schools (**30%**)

288 children attended school council conferences where they learnt about planning events at their schools, their emotions and helped the Public Health team think about being health champions.



Everything today about the conference was wonderful. I will be taking the ideas back to school to use in our meetings



A place everyone loves to be

HIGHLIGHTS

- New Head of School appointed Summer 2024
- Attendance is above National
- Multilingualism work with external partners

AWARDS & ACHIEVEMENTS



School Games
Platinum



Language Friendly School
(First School in England)



IQM
Flagship
Status



Youth Sport
Trust Gold



Newham
School of
Sanctuary



Kensington
Primary School,
Kensington Avenue,
Manor Park,
London,
E12 6NN

Executive
Head Teacher
Ben Levinson OBE

Head of School
Moji Omole



"Pupils' personal
development is
threaded throughout
the curriculum"

OUR WELL SCHOOLS PROGRAMME

- Emotional Health Programme
- 'Work Out Wednesdays'
- Intra Sports Week - 3 times a year
- Active Learning Breaks throughout the day
- 3 half hour fitness and 1 hour skills for life sessions per week per class

OUR BROAD AND BALANCED CURRICULUM

- Educational Visits linked to learning
- Residential Visits for Years 3,4,5,6
- Emotional Health Curriculum - emotion coaching and self regulation
- Communication Curriculum - parent performances linked to multilingualism

TTLT WRAP AROUND CARE

- Breakfast Club 7:30-8:30am
- 40 after school clubs
- Daily 6 O Clock Club

EXTERNAL SUCCESSES

- TTLT Primary Panathlon Winners
- TTLT Panathlon Swimming Gala Runners Up
- Winners of TTLT Competitions in Girls Tag Rugby, Premier League Stars, Boys Football and Girls Baseball

BUILDING IMPROVEMENTS

- Kensington House refurbishment
- Soft Play Room
- Sensory Room
- Small Playground - sports pitch and climbing frame

FUNDRAISING

- London's Air Ambulance
- Children in Need
- Cancer Research
- Comic Relief Red Nose Day

87%

of staff would
recommend a friend
for a job

86%

of children say
they are now fitter,
faster and and
stronger

91%

of parents say
their child is happy
at school



07

TRAINING HUB

The Tapscott Training Hub is here for our community of children and staff across the Trust and also for the external partners that we work with both within our borough and wider afield.

We strive to support and develop our workforce, equipping them with the necessary knowledge and skills to provide a high-quality education for all our children. We believe in continual reflection of current practice, as well as reviewing research and adapting our approach to being key principles built into each programme.

Programmes offered:

Additional ECT support through dedicated TTLT sessions

Further Development of Teaching and Learning Programme

Access to various network groups

A dedicated learning walk programme ranging across the year and for various subjects

Level 1 and 2 Team Teach
Behaviour De-escalation training

Level 1 and 2 AET (Autism Education Trust) Training

Apprenticeship Teacher Training

Dedicated EAL/ Multilingualism Support

Access to our R.E Hub

Cover Supervisor Development Programme

Minibus Driver Training

National Professional Qualifications (NPQs)

121

Total Training Sessions

714

Total Staff Trained

49% Internal

51% External

Our Training Hub continues to work alongside the Local Teaching School Hub London District East, leading and delivering key programmes for the ECF framework and NPQ. This year we have also been awarded accreditation for our Cover Supervisor Course through the CPD service and have been successful within our QA moderation for our ECT coaching and mentoring programme.

“North Beckton has robust structures in place to support and monitor the progress of ECTs. Laura and Sophie presented a range of strong evidence to demonstrate how ECTs are supported, monitored and assessed at the school

“N’ spoke with enthusiasm about her experience at Ranelagh. She emphasised the support received from her colleagues, the attention to her wellbeing and the impact this has had on her practice.

Training Hub Delivers BIG

The Training Hub has been supporting the Sigma Trust in a range of areas.

The Training Hub carried out a full inset day for the academy staff who travelled down from Essex. This consisted of 70 staff including teachers, senior leaders and head teachers. The inset covered various areas of work from culture and leadership, adaptive practice etc. The day was highly successful and this is thanks to the support from all TTLT schools involved and those people delivering school based sessions. This shows the strength and community amongst our Trust. Some comments we received included “**Loved your friendly school and staff**” and “**it’s really good to have been given a bank of ideas to adapt for my own teaching**”

Daniel Mansfield

DIRECTOR TRAINING HUB



Train Tapscott



Tapscott Learning Trust



The Tapscott Learning Trust

08

Be the best you can be

HIGHLIGHTS

- Retaining our IQM Flagship Status
- Significantly above national in KS2 statutory tests
- Recognised by the Local Authority resulting in a successful bid to extend our Resource Provision in 2025

AWARDS & ACHIEVEMENTS



School Games
Platinum



IQM
Flagship
Status



Primary
Geography
Quality Mark



Healthy
Schools
Bronze



Youth Sport
Trust Gold



Ranelagh
Primary School,
Corporation Street,
Stratford,
London,
E15 3DN

Executive
Head Teacher
Shella Lawrenson
Head of School
Leigh Welburn

OUR WELL SCHOOLS PROGRAMME

- Mental and physical healthiness are part of the Roots of Ranelagh, running throughout the school
- Basketball-Maths
- Adverb-Rugby
- For those children who find learning tricky, the environment is changed to support their style including Football Focus where children learn Maths and English whilst kicking a ball and scoring goals

OUR BROAD AND BALANCED CURRICULUM

- Much of our learning is done outside
- Huge advocates of Forest School learning
- All subjects taught with a transdisciplinary approach
- A carefully thought-out curriculum with end of year standards which the children need to reach on their educational journey

TTLT WRAP AROUND CARE

- Breakfast Club 7:30-8:40 am
- Napier Lodge Extended School 3-6pm
- Wrap around care: at Napier Lodge 7.30am - 6pm
- 49 after school clubs

EXTERNAL SUCCESSES

- Festival of Voices at Hackney Empire

BUILDING IMPROVEMENTS

- New pipework installed
- Playground KS2 Improvements

FUNDRAISING

- London's Air Ambulance
- Children in Need
- Comic Relief Red Nose Day
- Macmillan Cancer Support



"Parents and carers speak highly of the school's ability to involve them in many activities, as well as in keeping their children safe and happy"

82%

of staff say that they are proud to work at Ranelagh

98%

of parents say their child is happy at school

92%

of children say they enjoy school

TTLT ANNUAL AWARDS

On 30th June 2023 our annual awards ceremony was streamed simultaneously to all classrooms, nominees, parents and specially invited guests and was a great celebration of another successful year.

As always, we would like to thank our wonderful sponsors and particularly, W. Hardy Limited who were major contributors of the event.



SCAN to watch
our awards video





Outstanding Contribution to School Life KS2

Laiba Haider, Curwen Primary

Outstanding Contribution to School Life KS1

Lydia Scott, Ranelagh Primary

Creativity Award

Arifa Islam, North Beckton Primary

Young Achiever Award

Joint Winners
Izyan Chowdhury,
North Beckton Primary
and Mateo Stoica,
Rebecca Cheetham Nursery

Outstanding Educational Achievement KS2

Anna Kibone, Kensington Primary

Outstanding Educational Achievement KS1

Zayaan Tariq, Ranelagh Primary



Outstanding Educational Achievement EYFS

Asma Zoya Bawazeer,
Rebecca Cheetham Nursery

Sports Award

Kristin Mustakerska,
North Beckton Primary

Unsung Hero Award

Helen Lam, Chair of Governors
at Curwen Primary and
Rebecca Cheetham Nursery

Lifetime Achievement Award

Maureen Meeking,
Rebecca Cheetham Nursery

Staff Member who Most Enhances School Life

Lepa Rahman, Ranelagh Primary

External Provider Award

Joint Winners
Peter Moreton, Applecourt
and Jeremy Fallows, Aviva Investment



ESTATES AND OPERATIONS

The Trust continues to deliver on its commitment to provide and transform outstanding facilities for our children, to ensure that every pupil is provided with a learning environment that is stimulating for them.

The Trust's Estates and Operations Management Team invest much time and effort securing grants and external funding to tackle issues that have gone a long way to ensuring that our schools are great environments for learning, both for our children and staff.

Many improvements to our buildings continued this year and these were largely funded following bids to the DfE's Condition Improvement Fund (CIF). Our CIF building projects included completing the replacement of the large roof areas and an electrical rewiring project at North Beckton Primary School. Other smaller projects were undertaken at the other schools to improve playgrounds and SEND facilities for our children. We have future projects planned for the replacement of boilers at some of our schools to address condition and sustainability issues.

Health and Safety and Risk Management

The Trust works closely with an external consultant who supports us with the management of Health & Safety across our sites. Our annual general risk assessments have shown continuous improvements which highlights TTLT's commitment to ensuring the safety of our staff and children at every school. This is coupled with having robust risk management procedures in place that ensure we are continually assessing risk, both internally at school and at Trust level, as well as reviewing external factors that might impact on our schools.



£17.5k
(CIF Funding)
North Beckton Boiler Replacement

£22.5k
North Beckton Kitchen Water Heater Replacement

£32.5k
Kensington Playground Astro Turf and Climbing

£85k
Kensington School House refurbishment

£56k
(DfE Crime Resilience Funding)
Ranelagh Primary School Security

£14k
Curwen Primary School Security improvements

FINANCIAL OVERVIEW 2023-2024

Finance Summary

An extremely challenging year saw the Trust navigate through and overcome a range of difficult and demanding situations mainly due to the continued lack of core funding not matching the needs of our pupils. Together with falling rolls, which is a trend across the local geographic area, this year was a transition year where we had to make some tough decisions across the board.

With this in mind, and the ever growing pressures on budgets, we are happy to report another successful year for the Trust which saw us achieving our operational targets and outcomes whilst providing our children with an amazing education in a thriving environment. With a net in year pressure of just under £600k, which was monitored and reported to the Trustees on a regular basis reflects the challenging year that the Trust has had.



Taz Mansuria

CHIEF FINANCE
AND HR OFFICER

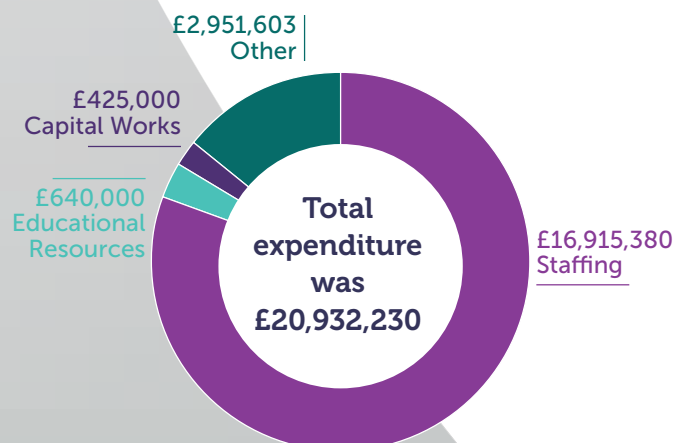
FUNDING INCOME

Funding for schools is predominantly received from the DfE/ESFA (Department for Education/Employment and Skills Funding Agency) as restricted funds. Other funding is from the Local Authority, and the remaining income is a combination of smaller grants and trading income.



EXPENDITURE

As is usual, the largest part of the funding was spent on staff salaries with teacher's salaries accounting for 50% and support staff 30% respectively. Other expenditure includes wider spend on key areas such as Estates Management, Technology including ICT, Teaching Resources and legislative costs.



CAPITAL WORKS

The Trust has completed building works following successful capital grant bids over the past three years totalling more than a million pounds across all its sites. Over **£100k** of contributions from the Trust towards these projects has ensured that our estates remain solid and provide a safe environment for our pupils and staff.

OUR STAFF

We are incredibly lucky to have such a successful and diverse workforce who go above and beyond to ensure the very best outcomes for our children and to support our families. By careful budget planning we are able to provide high levels of resources to meet the needs of our pupils and to support our staff through excellent professional development within our own Training Hub.

The Trust also works with many volunteers and offers training which has led many to be successful in obtaining employment in our schools or in other educational settings.



Staff
Retention
Rate
95%

96%
of staff say they
are treated
fairly and with
respect

95%
say they are
able to access
good quality
training

We would like
to thank every
single member of
staff for their hard
work and dedication
to our children and
communities over the
past year.



The Trust offers its staff:

- A generous annual leave package for all staff
- An Occupational Therapy and Employee Assistance Helpline
- Effective Induction Programmes for all staff
- A comprehensive ECT Programme
- Further development at all stages for support staff and teachers



I really enjoy working for the Trust, the children are amazing to work with



Together Everyone Achieves More

HIGHLIGHTS

- Maintaining Ofsted Outstanding in all areas - November 2023
- Despite budgetary pressures, we continue to offer a fantastic curriculum with lots of varied opportunities to our children.
- Children come to school and feel happy, safe and supported.

AWARDS & ACHIEVEMENTS



IQM
Flagship
Status



Artsmark
Gold Award
Awarded by Arts
Council England



Healthy
Schools
Gold



School Games
Platinum



Youth Sport
Trust Gold

CPS

**CURWEN PRIMARY
SCHOOL**

Executive
Head Teacher

Paul Harris

Head of School

Kate Mansfield

Curwen
Primary School,
Atlas Road,
Plaistow,
London,
E13 0AG



"All staff have high expectations of pupils, who understand how to meet and exceed them."

OUR WELL SCHOOLS PROGRAMME

- A wide variety of extended provision to ensure children have opportunities before, during and after the school day
- Student Leaders promoted to develop Curwen Core Skills
- Involving our families through Sports Days and our Family Bike Club
- A Comprehensive PSHE curriculum to support pupils

OUR BROAD AND BALANCED CURRICULUM

- All elements of the curriculum include lots of opportunities for 'real life' opportunities, educational visits and visitors in to support and enthuse pupils' understanding
- All pupils, including those with SEND, receive a tailored curriculum which is ambitious and well-sequenced
- Pupils are encouraged to pursue particular interests and Subject Leaders plan varied enrichment activities both in and outside of school

EXTERNAL SUCCESSES

- Shakespeare Schools Festival at Barking Theatre
- Festival of Voices at Hackney Empire
- We hosted Olympic athletes and YST representatives with student leaders supporting peers to take part in a carousel of sporting activities

BUILDING IMPROVEMENTS

- Sensory room moved to bigger space and completely redeveloped
- A new dedicated Therapy Room

TTLT WRAP AROUND CARE

- Breakfast Club 7:45-8:45 am
- 66 after school clubs - 82% of children attended at least one
- Daily 6 O Clock Club

FUNDRAISING

- London's Air Ambulance
- Jeans for Genes
- Children in Need
- British Red Cross Emergency Fund
- British Legion Poppy Appeal
- Comic Relief Red Nose Day

99%

of parents say that
their child is happy
at school

97%

of children believe
they have showed
resilience

99%

of staff say
that they feel
supported



PUPIL PARLIAMENT AND PUPIL VOICE

Our Pupil Parliament is a great team made up of elected pupil leaders from each of our four schools with an elected Chair and Vice Chair who set the agendas and lead meetings. This group of pupils come together regularly to ensure that all children's voices are heard.



PUPIL PARLIAMENT AIMS AND OBJECTIVES FOR 2023-24

- ✓ To work in partnership across the Trust
- ✓ To gather opinions from all of the children in the Trust
- ✓ To raise money for charities in fun and interesting ways
- ✓ To celebrate working in partnership



WHAT WE DID IN 2023-24

- ✓ We reviewed the new TTLT Aims, Vision and Aims and offered opinions
- ✓ Took part in filming the TTLT Awards with Mr. Harris
- ✓ Worked in partnership with another Trust's Pupil Parliament - Hearts Academy
- ✓ Worked together on our chosen charities - The Eco-Friendly Trust and London's Air Ambulance

We All Belong

HIGHLIGHTS

- Ofsted Good with Outstanding EYFS - October 2023
- IQM Centre of Excellence
- Relaunch of our PTA and Summer Fair

AWARDS & ACHIEVEMENTS



School Games
Platinum



Healthy Schools
Bronze



Youth Sport Trust
Gold



Computing Quality Mark



IQM Flagship Status



North Beckton
PRIMARY SCHOOL

North Beckton Primary School,
Harrier Way,
Beckton,
London, E6 5XG

Executive
Head Teacher

Shella Lawrenson

Head of School
Bal Kettory

OUR WELL SCHOOLS PROGRAMME

- 'Time for Curriculum' weekly lessons
- Educational Mental Health Sessions
- North Beckton Cycling Programme
- Mindfulness after school club
- Year 6 and SEND Swimming

OUR BROAD AND BALANCED CURRICULUM

- Much of our learning is done outside
- Science Week
- Educational Visits Map
- Travelling Book Fair

TTLT WRAP AROUND CARE

- Breakfast Club 7:30-8:40am
- 20 after school clubs
- Daily 6 O Clock Club

EXTERNAL SUCCESSES

- TTLT Basketball Competition Winners
- Place of Worship Winners

BUILDING IMPROVEMENTS

- Rewiring and lighting programme across the school
- New boilers

COMMUNITY EVENTS & FUNDRAISING

- London's Air Ambulance
- Children in Need
- Book Fair
- Comic Relief Red Nose Day
- MPS Society



"This is a school that lives up to its vision: 'we all belong'"

98%

of parents say their child is happy at school

93%

of children say they go on exciting educational visits

90%

of staff state they are provided with opportunities to develop their CPD



American Football Goalball Rowing Archery Golf SPORTS HUB SUCCESS

The two main aims of the Sports Hub are:

- To create opportunities for children to learn, collaborate and compete through school sport
- To provide high quality support and CPD to empower all staff to deliver outstanding PE lessons

Amazing offer, the profile of competitions are growing so much in our school

KAIZEN PRIMARY

Thank you Paul for your continued support!

GAINSBOROUGH PRIMARY



Paul Belcher

SPORTS HUB DIRECTOR



25
Competitions/
Festivals
2838
pupils taking part
14
Schools
participating

TTLT's Sports Hub delivers bespoke support ensuring that schools offer high quality Physical Education **PE**, School Sport **SS** and Physical Activity **PE** (**PESSPA**) lessons.

The Sports Hub has capacity for new schools to join, please contact info@ttl.academy



WORKING IN PARTNERSHIP

Forging forces to give children the best start in life

The Trust works in partnership with Rebecca Cheetham Nursery offering support in a range of areas such as ICT, H&S, governance and compliance, CPD and SEND. The nursery offers both government funded and flexible paid extended day places to children aged 2, 3 and 4 years old. The accompanying children's centre offers a range of different activities for families in the community.

- Preparing children to be 'Reception Ready'
- A broad and balanced curriculum
- Learning both indoors and outdoors
- Stay and Play SEND Sessions
- Forest School

During 2023/24 the Trust has also successfully supported other schools in their development and these include schools in the London Borough of Newham, other London boroughs as well as further afield in the East and South East of England.

As well as partnering with individual schools, we also work closely with a range of associates including Newham Council, the Department of Education, the Confederation of School Trusts and the Youth Sport Trust.

LPPA

improving parental engagement



Rebecca Cheetham Nursery & Children's Centre, Marcus Street, Stratford, London E15 3JT

Head Teacher
Rohan Allen



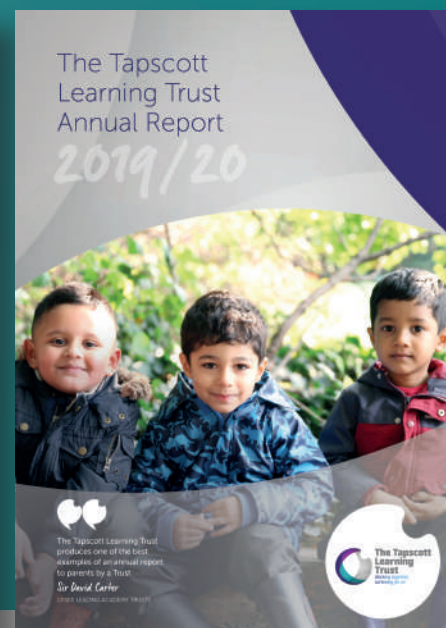
"Wonderful, engaging activities are on offer in the vibrant indoor and outdoor spaces."

This is a fantastic nursery and children's centre that has the children and the community at the heart of everything they do.

We have been working with TTLT for several years to support our primary setting in their school improvement journey. This has involved bespoke training to Year Leaders, HTLA's and also a whole day inset when our primary colleagues visited the Tapscott schools to experience and see best practice in action. The quality and impact of the training is perhaps demonstrated in the improved quality of education - which was recognised by a recent Ofsted inspection.

LYN WRIGHT, CEO, SIGMA TRUST





**GIVE US YOUR VIEWS,
WE LOOK FORWARD TO
HEARING FROM YOU...**

Email info@ttl.academy

Call 020 3108 0326

Visit www.ttl.academy



@TrustTapscott



The Tapscott Learning Trust



Tapscott Learning Trust



tapscott_trust



**The Tapscott
Learning
Trust**

*Working together,
achieving for all*

